

GANSK®

Refined Outdoor Living

FINISHES AND FABRICS GUIDE



FINISHES & FABRICS GUIDE

This guide presents GANSK's standard outdoor finishes and fabrics, organised by range: Light, Essence and Selection. Created to complement the price list and catalogue, it supports a faster and clearer specification process, making it easy to align materials and options across the project.

ARTISANAL PROCESS

Each GANSK piece is made with a strong focus on detail and long term outdoor performance. Our approach combines technical precision with handcrafted execution, ensuring consistency in feel, build quality and the final finish.

More than a list of options, this guide reflects a curated selection aligned with the brand's contemporary language, designed to simplify decision making and support professionals throughout the proposal and specification stages.

HOW THE RANGES WORK

The **Light**, **Essence** and **Selection** ranges organise available choices by level of selection. This structure makes it easier to match prices, finishes and fabrics while keeping the proposal consistent from the start of the project.

WHAT'S INSIDE THIS GUIDE

- 15 Standard colors.
- 3 Special finish options.
- 4 Textures.
- 61 Fabrics, divided by range: **Light** | **Essence** | **Selection**
- ♻️ Recycled fabric option available across all ranges.

HOW TO CREATE YOUR FURNITURE PIECE

- ① Select the product and reference in the price list.
- ② Select the finish, **Lacquered** or **Textured**, and select the desired RAL color from the list provided.
- ③ Choose the desired fabric from the fabrics range: **Light** | **Essence** | **Selection**
- ④ Choose the fabric line and colour within the selected range.
- ⑤ Finalise your request with the full specification.

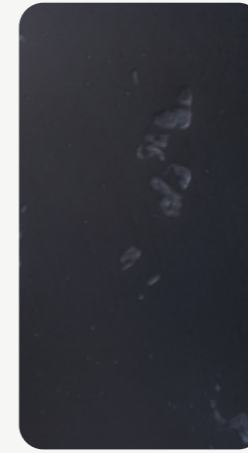
*GANSK reserves the right to modify, update or discontinue finishes, colors and fabrics without prior notice. Fabric availability is subject to stock and confirmation at the time of the order.



TEXTURES



VOLCANIC



SLATE



COCONUT



SAND

*Our textures can be lacquered in any of the colors shown below

SPECIAL FINISHES



RUST FINISH



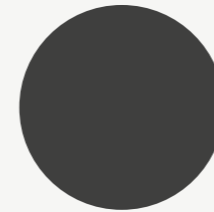
MICROCEMENT



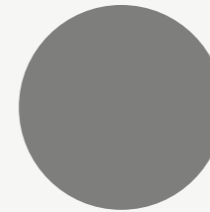
TERRACOTTA

*Special finishes are available on textured surfaces only. Additional colours available on request.

COLORS



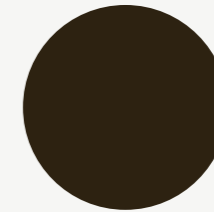
FORGE



GRAVEL



CLOUD



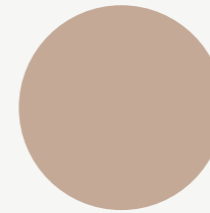
ESPRESSO



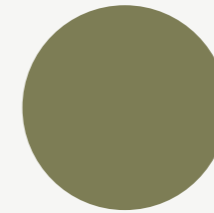
LINEN



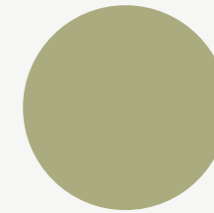
SHELL



DUNE



FIELD



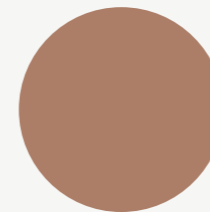
SAGE



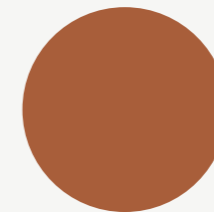
OLIVE



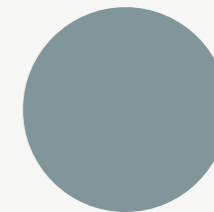
AMBER



CLAY



CANYON



FJORD



GLACIAL



sunbrella® | FABRICS



EASY TO CLEAN



WATER AND STAIN RESISTANT



UV/FADE RESISTANT



MOLD/MILDEW RESISTANT



BLEACH CLEANABLE



BREATHABLE COMFORT



LIMITED WARRANTY

Sunbrella acrylic fabrics carry a 5-year limited warranty for indoor and outdoor applications against abrasion, pilling, loss of colour and strength in normal usage and exposure conditions.



NON PFAS

Our company has invested significant resources to find alternatives to PFAS (perfluoroalkylate) chemicals and has developed an optimal non-PFAS finish for all Sunbrella upholstery fabrics. Our fabrics will retain their water repellency, durability, bright colours, appearance, softness, texture, ease of cleaning and strength.



ZERO LANDFILL

For over 30 years, Sunbrella has recycled its industrial waste such as yarn and packaging. Today, every Sunbrella manufacturing facility around the globe sends absolutely no waste to the landfill.



PRODUCT LIFECYCLE MANAGEMENT

As part of its Sunbrella ReCycled offer, Sunbrella created the Endless Stories collection containing up to 50% recycled solution-dyed acrylic fibres. Our recycled fibres are sourced directly from production plants where waste is divided into colour groups and turned back into fibres. These fibres are then blended with the "virgin" Sunbrella fibres.



LESS WASTE

Our quality Sunbrella fabrics do not rot or fade and are highly resistant over time. As our fabrics do not need to be replaced as often as traditional fabrics, they generate less waste.



LOW WATER CONSUMPTION

In the solution-dyeing process, colour pigments are added to the core of the fibre, to guarantee colourfastness and save water. Throughout our manufacturing process, we take steps to reduce the amount of water we use, notably by recycling washing water through the installation of water treatment plants.



In partnership with the renowned brand Sunbrella, Gansk incorporates high-quality and high-performance technical fabrics designed to withstand prolonged exposure to the elements without compromising comfort, colorfastness, or long-term durability.



Light | FABRICS

			
NATTÉ LINE HEATHER GREY			
NATTÉ LINE DARK TAUPE			NATTÉ LINE GRAUMEL CHALK
NATTÉ LINE FROSTY CHINÉ			NATTÉ LINE NATURE
NATTÉ LINE AGAVE			NATTÉ LINE LINEN CHALK

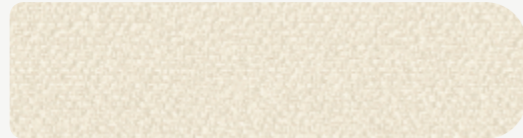
RECYCLED FABRICS

			
HERITAGE LINE DUNA			
HERITAGE LINE SLATE			HERITAGE LINE PAPYRUS
HERITAGE LINE LEAF			HERITAGE LINE MOSS
HERITAGE LINE RUST			

WANDER LINE
GOBI



WANDER LINE
EVEREST



WANDER LINE
PILAT



WANDER LINE
MANIOC



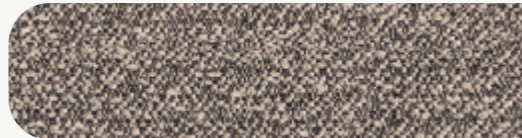
WANDER LINE
BISON



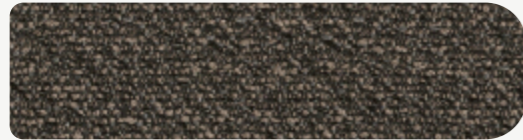
WANDER LINE
WOLF



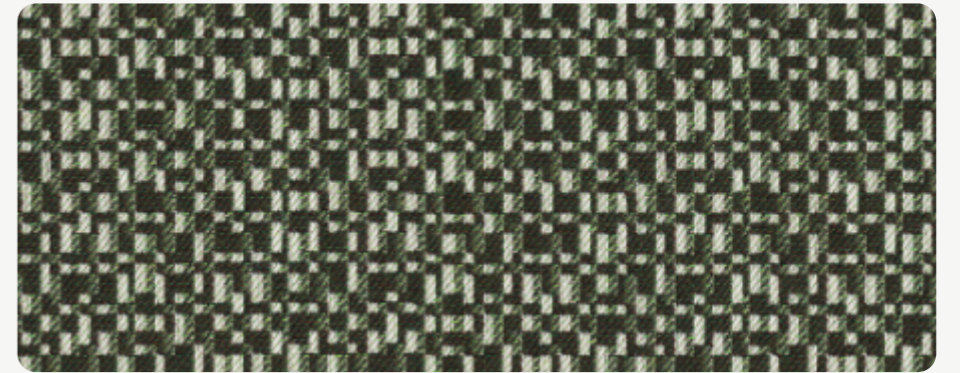
WANDER LINE
GRANITE



WANDER LINE
ETNA



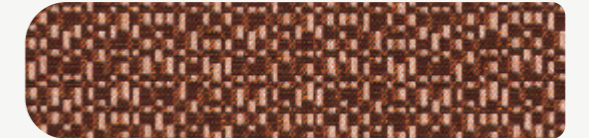
CARAT LINE
AGATE



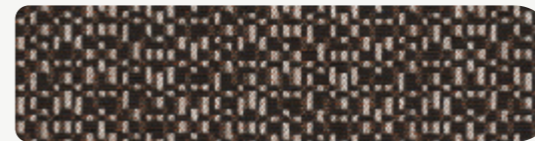
CARAT LINE
AZURITE



CARAT LINE
GRENAT



CARAT LINE
ONYX

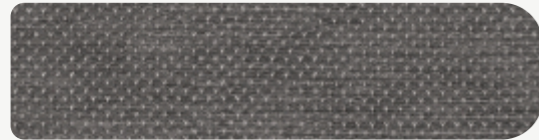


♻️ RECYCLED FABRICS

WADI LINE
SOAP



WADI LINE
STEEL



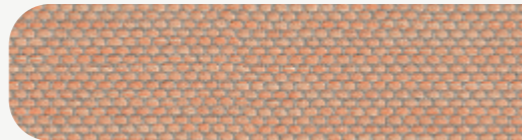
WADI LINE
SESAME



WADI LINE
TORTUGA



WADI LINE
SHRIMP



WADI LINE
RMIERA



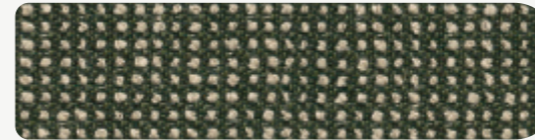
WADI LINE
ECLIPSE



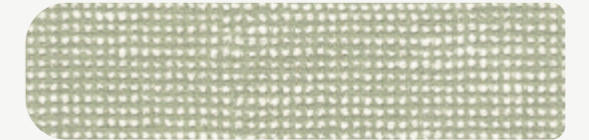
SLOW LINE
FARAFRA



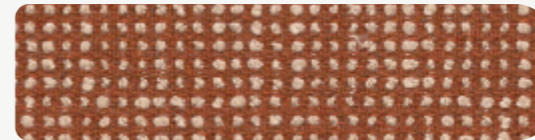
SLOW LINE
FERN



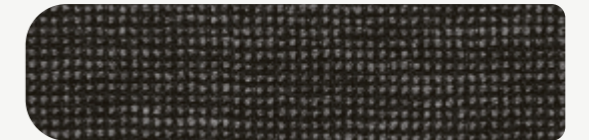
SLOW LINE
SPIREA



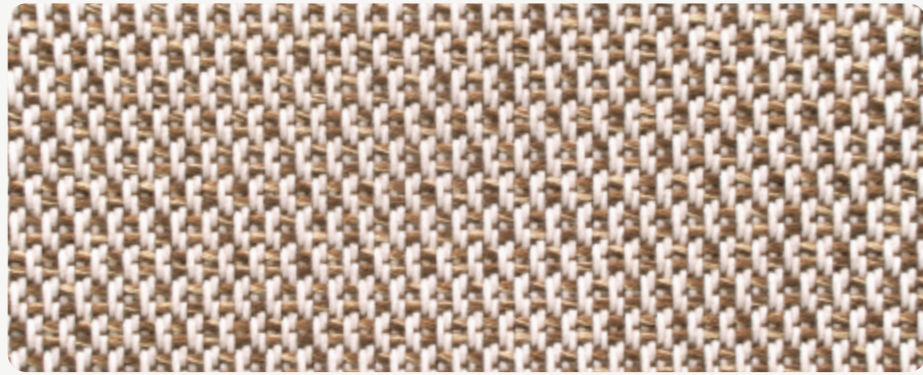
SLOW LINE
ALEZAN



SLOW LINE
ILLITE



LOPI LINE
FOSSIL



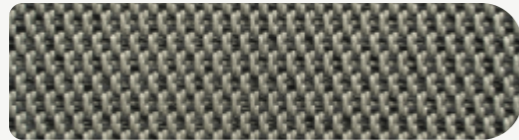
LOPI LINE
SILVER



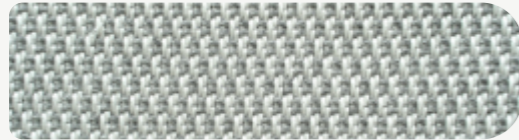
LOPI LINE
COCONUT



LOPI LINE
CHARCOAL



LOPI LINE
ASH



LOPI LINE
MARBLE



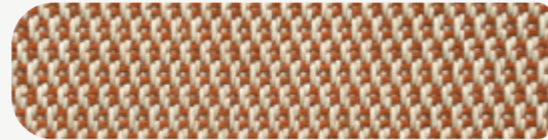
LOPI LINE
ANTIQUE



LOPI LINE
PEPPER



LOPI LINE
BUD



LOPI LINE
FAWN



LOPI LINE
CHAI

TERRITORY LINE
OXYDE



TERRITORY LINE
LAZULI



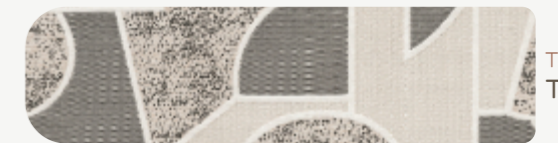
TERRITORY LINE
ALUM



TERRITORY LINE
TURMERIC



TERRITORY LINE
TIN



RECYCLED FABRICS

YAMA LINE
TANADA



YAMA LINE
ERABLE



YAMA LINE
TOMORI



YAMA LINE
FUJI



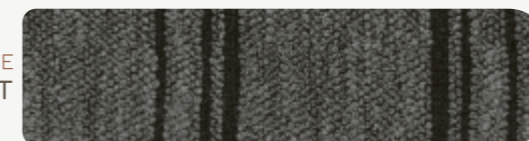
HARVEST LINE
ESTEREL



HARVEST LINE
NILE



HARVEST LINE
BASALT



HARVEST LINE
KAOLIN



CLEAN AND CARE GUIDE

GENERAL NOTES

- The information presented here is purely indicative and serve as a guide to help keeping the furniture looking good and guaranteeing its maximum durability. Nonetheless, it is inevitable that furniture will wear out the more it is used;
- Although GANSK cannot be held responsible for damage caused by misuse of the products, we are 100% available to help you solve any problems by contacting us through the usual channels;
- There are no absolutely indestructible finishes, but with care and good maintenance, they are guaranteed to last longer;
- For badly damaged or excessively worn products, please contact us through the usual channels so that we can assess the best solution;
- For any further assistance, please do not hesitate to contact us through the usual channels;

GENERAL WARNINGS

- Keep the product away from sources of heat and/or air conditioning to prevent the parts from drying out excessively;
- Keep the product away from excessively humid environments;
- Avoid exposure to sunlight and do not place the product outside if it has not been prepared for such use;
- Do not use cutting, sharp or pointed objects directly on any surface;
- Do not apply any cleaning product that has not been expressly advised by GANSK;
- Always test any cleaning product on an inconspicuous area before using it on the entire surface;
- It is not advisable to place any object on table tops without protective covers such as towels, placemats, cork/ silicone bases, etc., to prevent scratches or damage to the finish;
- Never place any kitchen utensil such as hot pots/pans directly on any surface without a protective cork/ silicone base, at the risk of oxidizing/damaging the protective varnish;
- On coffee/side tables, it is highly advisable to use cup-holders and/or cork/silicone protectors to prevent scratches or damage to the finish;
- It is important to regularly move items or accessories that are resting on furniture with wide bases, such as lamps, centerpieces, plates, etc., so that the finish has constant contact with the air. Many finishes need to "breathe" in order to maintain their appearance and durability, so keeping some part of the furniture/table covered for a long time can create stains on the finish;

INSTRUCTIONS BY MATERIAL

OUTDOOR TEXTILES (SUNBRELLA)

Warnings:

- Do not place products outside that have not been explicitly prepared for such use;
- Do not use cutting, sharp or pointed objects directly on any surface;
- Do not apply aggressive chemicals or abrasive materials;
- It is highly recommended to use protective covers on the furniture and/or store it sheltered from the weather, if the products will not be used for long periods, in order to avoid excessive accumulation of dirt and/or possible damage caused by open exposure to the weather. At GANSK we have protective covers, contact us through the usual channels to find out more;
- Although the fabrics and foams are suitable for outdoors, it is recommended to avoid water or other liquids accumulating on the cushions, but to place them vertically exposed to the air so that they can drain and dry properly, avoiding stains and the appearance of mold;

Maintenance and Cleaning

- Use a soft flannel slightly dampened in distilled water and dry with a dry flannel;
- Gently clean/ vacuum the parts regularly to remove all residue and/or dust;
- For more thorough cleaning, use a soft flannel dampened in a solution of water (up to 40°) and neutral Ph soap, rubbing gently. For more difficult stains, add 50 ml of bleach per liter to the previous solution, applying it with a soft brush to the stain and leaving it on for 15 minutes. At the end of this process, rinse the entire surface thoroughly to remove all residue and leave to dry outdoors, ideally in a sheltered place;
- Do not apply any cleaning product not expressly recommended by GANSK;
- Stained fabrics or fabrics with difficult stains should be cleaned by a professional;
- For more detailed instructions go to: <https://www.sunbrella.com/clean-sunbrella-upholstery>

GLASS

Warnings:

- Do not use sharp, pointed or pointed objects directly on any surface;
- Do not lean on tabletops that are not fully supported by the base. In general, glassware only rests on the base, so it can become more unstable at the edges;
- Do not place/rest objects abruptly on glass tabletops to prevent them from breaking or being damaged in any way;

Maintenance and Cleaning

- To clean clear glass, use a cloth dampened in warm water and dry immediately with a soft flannel;
- To remove stains, use a cloth dampened with isopropyl alcohol or a glass cleaner, always making sure that it does not come into contact with other parts of the furniture;
- Do not use abrasive products or any cleaning product not expressly recommended by GANSK;

LACQUERS

Warnings:

- Do not place products outdoor that have not been explicitly prepared for such use;
- Do not use cutting, sharp or pointed objects directly on any surface;
- Do not apply aggressive chemicals or abrasive materials;
- It is highly recommended to use protective covers on the furniture and/or store it sheltered from the weather, if the products will not be used for long periods, in order to avoid excessive accumulation of dirt and/or possible damage caused by open exposure to the weather. At GANSK we have protective covers, contact us through the usual channels to find out more;

Maintenance and Cleaning

- Use a soft flannel dampened in a solution of water and neutral pH soap, rubbing gently. After this process, rinse the entire surface thoroughly to remove all residue and leave to dry in the open air;
- Do not apply any cleaning product not expressly recommended by GANSK;

METALS

Warnings:

- Keep the product away from sources of excessive heat and excessively humid environments;
- Avoid exposure to sunlight and do not place the product outdoors if it has not been prepared for such use;
- Do not use any abrasive products or chlorine-based solutions;

Maintenance and Cleaning

- To clean stainless steel, use a soft flannel dampened in a pH-neutral soap solution and dry with a dry flannel;
- To remove finger marks, use a soft flannel dampened in isopropyl alcohol;
- Do not apply any cleaning product not expressly recommended by GANSK;

See the Clean and Care and
The Finishes Catalogue digitally
Scanning the QR codes below



(Clean and Care)



(Finishes and Fabrics
Catalogue)

*GANSK reserves the right to correct, change or add information to this manual at any time without notice, if necessary. The digital version will always be updated and can be consulted on the following page.



Production & Office Address

Rua Nova do Corujo, nº164, Vila Boa
4750-784, Barcelos, Portugal

Showroom Address

Rua Afonso Nunes de Mariz, nº1050, Mariz
4750-571, Barcelos, Portugal

T: +351 253 826 714 | M: +351 937 205 339
www.gansk.pt | info@gansk.pt

Gansk, a brand by Albino Miranda, Lda.

